
电机参数 Motor Data 电机型号 Motor Model

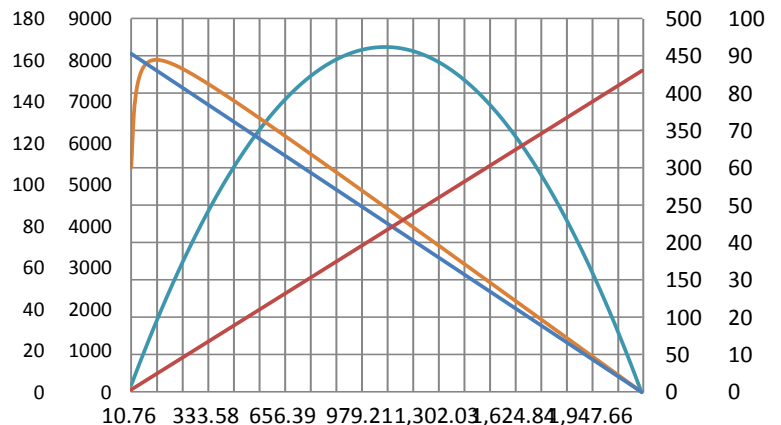
额定电压参数值 Value at rated voltage				XBD40701	XBD40701	XBD40703	XBD40704	XBD40704
				2082GT-60205	5076GT-60205	6075GT-60205	8076GT-60205	8022GT-60205
额定点 At Nominal	1	额定电压 Nominal voltage	V/DC	12	24	36	48	48
	2	额定转速 Nominal speed	rpm	7585	7030	6900	6992	1606
	3	额定电流 Nominal current	A	12.09	6.20	4.33	3.37	0.85
	4	额定转矩 Nominal torque	mNm	161.41	181.25	189.36	196.86	172.37
空载点 Free Load	5	空载转速 No-load speed	rpm	8200	7600	7500	7600	2200
	6	空载电流 No-load current	mA	500	180	180	100	18
最大效率点 At Max. Efficiency	7	最大效率 Max. efficiency	%	89.0	90.8	88.6	90.4	85.3
	8	转速 Speed	rpm	7749	7258	7163	7258	2046
	9	电流 Current	A	8.998	3.794	2.512	1.941	0.234
最大输出功率点 At max. Output power	10	转矩 Torque	mNm	118.4	108.8	106.5	110.7	44.7
	11	最大功率 Max. output power	W	462.0	480.8	464.8	489.6	37
	12	转速 Speed	rpm	4100	3800	3750	3800	1100
堵转点 At Stall	13	电流 Current	A	77.8	40.3	26.1	20.6	2
	14	转矩 Torque	mNm	1076.1	1208.3	1183.5	1230.4	319.2
堵转点 At Stall	15	堵转电流 Stall current	A	155.00	80.50	52.00	41.00	3.10
	16	堵转转矩 Stall torque	mNm	2152.1	2416.7	2367.0	2460.7	638.4
电机常数 Motor Constants								
	17	电机阻抗 Terminal resistance	Ω	0.08	0.30	0.69	1.17	15.5
	18	电机感抗 Terminal inductance	mH	0.016	0.083	0.180	0.340	4.080
	19	转矩常数 Torque constant	mNm/A	13.93	30.09	45.68	60.16	207.1
	20	转速常数 Speed constant	rpm/V	683.3	316.7	208.3	158.3	45.8
	21	转数/转矩常数 Speed/torque constant	rpm/mNm	3.8	3.1	3.2	3.1	3.4
	22	机械时间常数 Mechanical time constant	ms	5.60	4.42	4.30	4.05	4.31
	23	转子惯量 Rotor inertia	gcm ²	140.23	134.10	137.14	125.21	119.52

电机特性曲线 (Motor Characteristics Curve)

24	极对数 Number of pole pairs	1
25	相数 Number of phase	13
26	重量 Weight of motor	g 485
27	噪音 Typical noise level	dB ≤45

电机端子定义 Motor terminal definition

+ Vcc
- GND



Connection :

防护等级 Protection level

IP

54

A

rpm

mN.m

W

%